

## FUTURE EVENTS

### PARISH COUNCIL

Parish Council Meetings first Thursday every month at Havenstreet Steam Railway. Residents wishing to car share or a lift to meeting to telephone the councillors or stand at the bottom of Church Road.

### OTHER EVENTS

**Bus meeting 12<sup>th</sup> Aug 7pm Havenstreet Community Centre,**

**Havenstreet Community Association** Ploughmans lunch 14<sup>th</sup> August at 12 o'clock. Havenstreet Community Centre Main Rd Havenstreet £6.00 for adults £3.00 for children.

Willis-Fleming Shrine Heritage open days 11-14 September 2008

Remembrance Service Willis-Fleming shrine 9<sup>th</sup> November 2008 2.30pm

### ISLE OF WIGHT STEAM RAILWAY

Folk Weekend 16 and 17 August

Steam Show 22 – 25 August

Morris Minor Rally 31 August

Model Railway Exhibition 6 – 7 September

### CONTACT DETAILS

Cllr B. Blezzard, 105 Perowne Way, Sandown Tel.402259

Cllr L. Bell, Whitefield House, Ashley Road, Ashley. Tel.564356

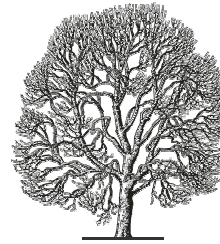
Cllr B. Davey, 11 Ashley Park, Ashley Road, Ryde. Tel.810698

Cllr H. Johnson, Little Upton Farm, Gatehouse Road, Ashley. Tel.563236

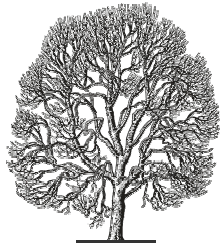
Cllr H. Marshall, Longstones, Pondcast Lane, Havenstreet. Tel.882450

Cllr. B Wyatt, Timberscombe, Church Road Havenstreet Tel.884925

Mrs C Lewis, Parish Clerk, 26 The Willows, Newport, Tel. 525124, e-mail lewisce26the@Hotmail.co.uk



# HAVENSTREET AND ASHEY PARISH COUNCIL



[www.havenstreetandasheypc.co.uk](http://www.havenstreetandasheypc.co.uk)

### BUS USERS MEETING

The Parish Council has organised a meeting with Marc Morgan-Huws from Southern Vectis, Martyn Mullins and Andy Morris of the Isle of Wight Council. All bus users are invited to attend.

12<sup>th</sup> August 2008, 7pm

HAVENSTREET COMMUNITY CENTRE, MAIN ROAD,  
HAVENSTREET

HAVENSTREET RECREATION GROUND QUESTIONNAIRE  
CENTRE PAGES.

## OVERVIEW OF THE LAST THREE MONTHS

Welcome to our August Newsletter. Firstly we welcome Cllr Barry Wyatt back to the Parish Council. It has been another busy period across the Island with the schools re-organisation being taken forward together with consultations on the preferred options for the Island Core strategy. These consultations are to decide where the IOW quota of the 520 houses a year should be built. The Parish Council received an informative talk from Dawn Cooper of the planning office explaining that the focus is on areas needing re-generation such as Cowes, Ryde, Newport and Sandown.

On the 28<sup>th</sup> June 2008 the Parish consultation Day was held at the Community Centre. We thank the ladies of the Community Association, St Peters Church and Countrywomens Association for dispensing refreshments. The police were represented by PC Nick Massey and PCSO Katy Berry who were kind enough to stay all day, and were very busy answering queries. The results of the consultation showed the main concerns to be traffic and housing together with the bus service. The results will be published shortly. Thank you to all those who attended.

The Awards For All funding for the Parish surgery and IT suite has now ceased. Having achieved the Parish Council's aim of improving access to the Parish Council for residents the Parish surgery will continue on Saturdays and the IT suite will be available at the same time. There will be internet access for those people wishing to use the suite.



## TRAFFIC

The Parish Council had a very productive meeting with members of the Highways engineering and traffic management team in June and this will be followed with a further meeting in October. If you have any new issues you would like raised please contact the Parish Council. A recent addition to the list of concerns has been the speed of traffic along Briddlesford Road which, as it falls within her ward, Cllr Cousins has taken on board

Our thanks go to those residents in Ashey Road that have reduced the height of their hedges improving visibility for the users of the road.

At the request of the Parish Council the following actions have been taken or agreed; safety bollards have been installed on the approaches to the bridge in Deacons Lane, quiet road status for Gatehouse Lane and Deacons has tacit agreement, a revised junction layout at Rowlands Lane/Stroud Wood Road proposed and in the process of being drawn up, the bridge in Ashey Road has a new warning sign, traffic monitoring has occurred in Ashey Road and we await the results. Green Lane has had a LGV survey carried out. There are proposed parking restrictions and traffic orders under consultation for Upton Cross, Elizabeth Gardens and the junction of Pondcast Land and Church Road.



## PLANNING

Sans Souci. We are advised that all objectors to the San Souci application will have been contacted by the inspectorate. Those residents wishing to comment and requiring internet access to view their previous letters may do so on Saturday morning at the Parish Surgery. The Parish Council will be re-stating its case.

## PHONEBOXES

The Phonebox at the Steam Railway was designated for removal by BT. The Parish Council registered its objection and awaits the results of the consultation. The phonebox in the middle of the village has been removed also.

## POSTBOXES

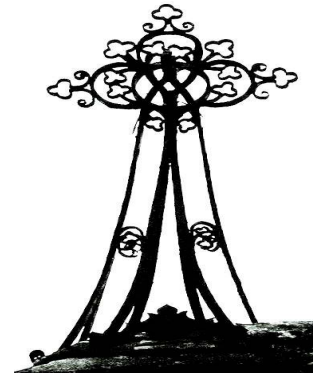
Highways department are looking into the ownership of the land adjacent to the bus shelter to investigate whether the new postbox may be installed there. The Parish Council is awaiting further information.

## BUS SHELTER

The Parish Council is investigating the potential for replacing the bus shelter with something more in keeping with the location.

## VOLUNTEER DRIVERS

OPTIO are seeking volunteer drivers for it's scheme. Petrol and expenses are paid. Those people interested should contact the commuity transport helpline on 522226.



Havenstreet War Shrine

The War Shrine at Havenstreet will be open on Saturday 13th and Sunday 14th September 2008 as part of this year's Heritage Open Days scheme ([www.heritageopendays.org](http://www.heritageopendays.org)). The Shrine was dedicated ninety years ago, on 30th June 1918. It was built by local landowner John Willis Fleming in memory of his second son, Richard, and the other thirty-eight war dead of Havenstreet and Binstead parishes. The Shrine is one of a pair; its twin, built at the same time at North Stoneham in Hampshire, is presently a ruin. The 'singularly beautiful' Shrine was constructed from limestone from the Fleming family's famous quarries at Binstead. As well as the central section containing the oak altar, there were compartments on either side, enclosed by oak doors, which were intended for prayer. In these, Mr Willis Fleming hoped that "many a soul will find consolation and help." The rolls of honour listing the thirty-six war dead were added in 1920. The Shrine will be open from 11am to 4pm each day, with a short talk at 2.30pm on the Sunday. The Shrine is situated at the north end of Havenstreet village, near Coppid Hall Farm. *If you have any information – memories, stories, photographs – connected with the Shrine and the soldiers commemorated there, please contact Harry WillisFleming at [harry@willisfleming.org.uk](mailto:harry@willisfleming.org.uk), or telephone 07745486 231.*

## Community safety advice from the Isle of Wight Crime and Disorder Reduction Partnership

The chance that you or your family will become a victim of crime is very low – the Isle of Wight is one of the safest areas of the United Kingdom in which to live and work. However, we can make our Island even safer by following some simple safety suggestions.

It is worth remembering, that most crimes are 'spur of the moment' actions, often in response to an opportunity presented by carelessness such as a window being left open or valuables left on display. That is why the best way to reduce the risk of becoming a victim of crime, is to take sensible precautions. Most people already do this as part of their everyday lives - often without even realising it. You are probably aware of some of the suggestions listed below, but others may be new to you, and you may find them useful.

### Basic Tips on Home Safety

- When you go out, always lock the door and close the windows – even if you are just going out for a short time.
- Window locks, especially on older windows, will help stop people getting in - modern UPVC windows may have them built in (and remember: burglars are less likely to break in if they have to smash a window).
- If you have mortice deadlocks, use them. They make it harder for a thief to get out again. But don't leave the key near the door or in an obvious place.
- Don't leave spare keys outside or in a garage or shed, and put car keys or garage keys out of sight in the house.
- Use timers for lights and radios if you need to be away from home overnight and during the dark evenings whilst you are at work. They will create the impression that someone is in.

PAGE 4

- Visible professionally fitted burglar alarms, good lighting, and carefully directed security lighting can put burglars off. But make sure that lights don't disturb your neighbours, and that alarms re-set after 20 minutes.
- Fitting a 'door viewer' allows you to see who is at the door.
- A door chain means that you can open the door a little way to talk to unknown visitors. (Stop; Chain; Check.)

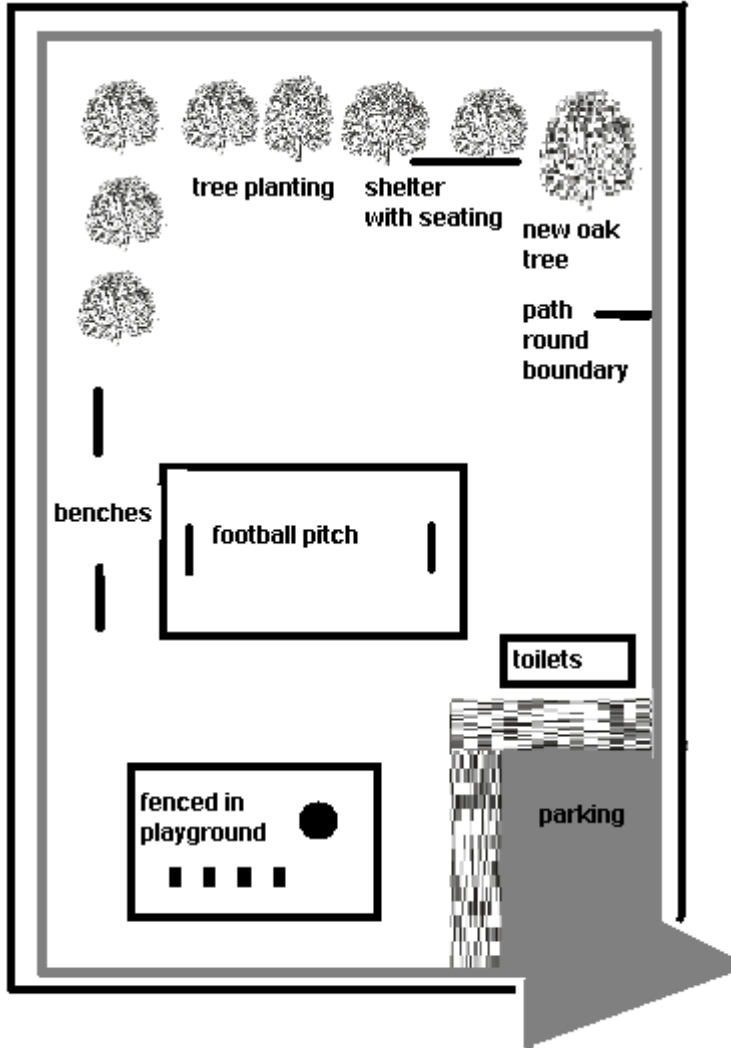
### Watch Out for 'Con' Artists

- Don't fall for anything that sounds too good to be true – a free holiday, sweepstake prizes, cures for cancer and arthritis, or a low-risk high return investment schemes. Remember, if something seems too good to be true – it probably is.
- Check your bank and credit card statements carefully and report any discrepancies immediately.
- Never give your credit card, phone card, Social Security, or bank account number to anyone over the phone unless you have checked that they are from a bona-fide organisation.
- **Never give out your PIN number, even if the person says they represent your bank or the police.**
- Never rush into signing anything – an insurance policy, a sales agreement, or a contract. Read it carefully and have someone you trust check it over.
- Don't purchase goods or services from doorstep callers. Don't let them into your home.

By securing your home and property, you can save yourself the distress and expense of suffering from crime and make your community a safer and better place in which to live.

PAGE 5

# HAVENSTREET RECREATION GROUND



## Suggestions for Havenstreet Recreation Ground

Residents of Havenstreet will remember the recreation ground committee drew up plans for alterations to the recreation ground. In April 2008 the Parish Council resumed responsibility for all decisions affecting the recreation ground. In order that the Parish Council may seek funding for this project we now need to consult the public. Please answer the following questions and send your answers either to the clerk or a councillor or answer on-line at [www.havenstreetandasheypc.co.uk](http://www.havenstreetandasheypc.co.uk)

- 1) How often do you use the recreation ground.?.....
- 2) What do you use the recreation ground for.?.....
- 3) On a scale of 1 to 5 with 1 being excellent and 5 being poor how would you rate the park as an area of community land?.....
- 4) Which of the following suggestions do you support
  - a) Path around edge of park YES/NO
  - b) Native trees planted at end of recreation ground YES/NO
  - c) Additional play equipment and fence around play area YES/NO
  - d) Parking YES/NO
  - e) Reduction in height of hedge nearest Church Road YES/NO
  - f) Toilet block YES/NO
  - g) Sheltered seating YES/NO

### SPONSORSHIP OF BENCHES

The Parish Council has agreed to pay for the benches at the recreation ground and for a donation residents may sponsor the seats or have one dedicated to the memory of a loved one. Please contact the clerk on 01983-525124 for details.

